



theSOFTtribe

In partnership with

mastercard  
foundation

# AgriConnect FREQUENTLY ASKED QUESTIONS

## FAQs



A young Black man with short dark hair, wearing a dark blue shirt, is smiling and looking down at a plant in a greenhouse. He is holding a white string that is part of a plant support system. The background shows other plants and the structure of the greenhouse.

# Section 1

About AgriConnect and its Benefits



## What is AgriConnect?

AgriConnect has been designed to incentivize Ghanaian youth to participate in agriculture, especially technology-driven agriculture. As more and more youth become engaged in farming it will encourage other youth to engage more fulsomely in agriculture and view it as a viable and sustainable long-term career. The digitalization of the agriculture sector is one key component that is expected to accelerate youth participation in agriculture.

AgriConnect will supply 10,000 agriculture and agriculture-related or adjacent students, including young women and differently-abled persons in 10 academic institutions in Ghana with:



A laptop and internet connectivity.

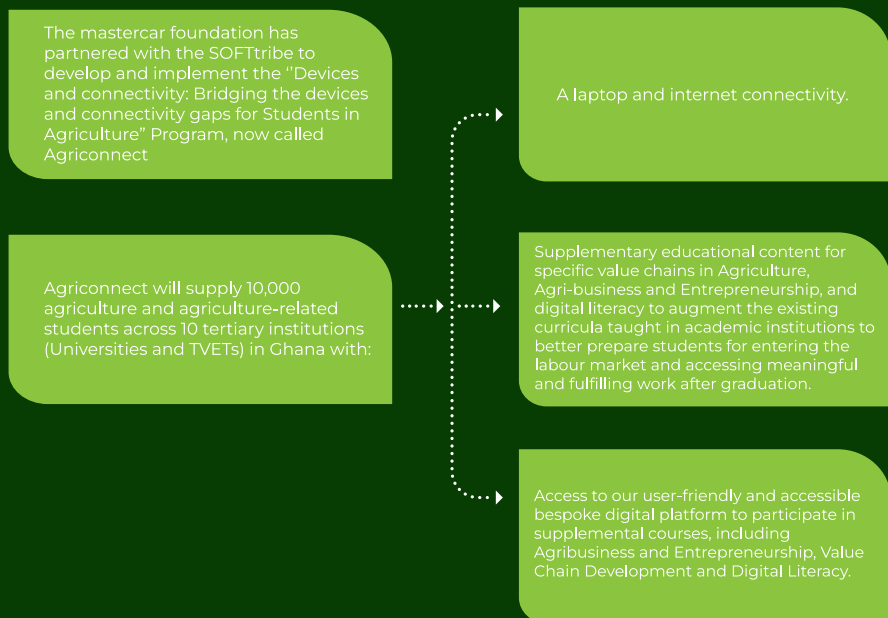


Access to our user-friendly and accessible bespoke digital platform to participate in supplemental courses, including Agribusiness and Entrepreneurship, Value Chain Development and Digital Literacy.

AgriConnect has two connectivity partners – Vodafone and MTN that will provide portable internet devices (Mi-Fi) that will allow students to access and browse the internet from anywhere and allow them to engage with the supplemental courses that was developed for them as part of AgriConnect.

Currently, the proof-of-concept phase of AgriConnect is being implemented. It is expected that after this 18-month proof-of-concept phase is completed, AgriConnect will be scaled up to support more youth and be implemented in several more tertiary-level academic institutions (TVETs and universities) across Ghana.

Essentially, AgriConnect will contribute to the removal of barriers faced by Ghanaian youth in accessing technology and education and providing them with 21st century skills.



## 2. Is AgriConnect and the Devices and Connectivity Devices: Bridging the devices and connectivity gaps for Students in Agriculture Programme the same?

Yes, it is the same programme. Devices and Connectivity was the original name of the programme but we changed the name of the programme so that is more easily recognized and resonates better with the target group – that is young people between the ages of 18 – 35 years.





### **3. Which organizations are funding and implementing AgriConnect?**

The Mastercard Foundation is providing resources and strategic oversight to theSOFTtribe Limited, its implementing partner for AgriConnect. The Mastercard Foundation works with visionary organisations to enable young people across Africa and indigenous communities in Canada to access dignified and fulfilling work. The Foundation spearheads the Young Africa Works Initiative which is a strategy to enable 30 million young Africans to access dignified and fulfilling work by 2030, with 3 million of these being young Ghanaian women and men.

theSOFTtribe Limited is leading the implementation of AgriConnect in collaboration with other local partners. theSOFTtribe Limited is a Ghanaian-owned and locally based software development company and information technology (IT) solutions provider established in 1991 focusing on home-grown tropically tolerant IT solutions. These IT solutions have been widely used by multinational corporations, civil society organizations (e.g. NGOs), academic institutions and government institutions across the West African sub-region.

## 4. What are the benefits of participating in AgriConnect? Why should you register to participate in AgriConnect?

AgriConnect has been designed to empower Ghanaian youth, including young women and differently-abled persons to:

**01**

Access technology (computers and connectivity) and learning opportunities across agriculture and agriculture-related value chains.

**02**

Acquire digitally enhanced learning in agriculture and agriculture adjacent sectors as a means of increasing their access to dignified and meaningful jobs in the agricultural sector and agri-adjacent industries upon graduation.

**03**

Acquire knowledge and a wider variety of skills along various points of several agricultural value chains.

**04**

Leverage technology to impact their agency and voice, resilience, and quality of life through their participation in practical experiences within agriculture which will boost their creativity and empowerment.

## 5. What educational institutions are part of the AgriConnect programme?

Ten tertiary-level academic institutions (TVETs and Universities) are currently part of the AgriConnect Programme. These are:

1. Damongo Agricultural College
2. Ejura Agricultural College
3. Kwadaso Agricultural College
4. Kwame Nkrumah University of Science and Technology (KNUST)
5. Ohawu Agricultural College
6. Pong Agricultural College
7. University of Cape Coast
8. University of Development Studies
9. University of Ghana
10. Wenchi Agricultural College



## 6. Will additional educational institutions be invited to participate in AgriConnect in the future?

Yes, once the proof-of-concept (PoC) phase is completed and is successful, we expect that AgriConnect will be rolled out to several other universities and TVETs across Ghana. The full-scale programme will be an expansion of the PoC, where lessons learned from the PoC will be incorporated towards improving, enhancing and where possible scaling up project outcomes.



## 7. How do I qualify to participate in AgriConnect?

Students that are eligible to participate in AgriConnect must be attending one of the 10 participating academic institutions and be registered in the agriculture faculty or pursuing an agriculture adjacent programme (e.g agri-engineering, agribusiness, agri-economics among others). You can approach your school to indicate/express your interest. theSOFTtribe will work closely with the participating academic institutions to develop the list of eligible students consistent with the focus of AgriConnect.

The AgriConnect team will receive the names of students that are both eligible and interested in participating in AgriConnect from the participating schools. An invitation to participate in AgriConnect will be sent to each student's existing email address. At this point you will be able to register to participate in AgriConnect.

## 8. How do I register to participate in AgriConnect?

There are five simple steps to register for AgriConnect:



The email invitation that you receive from your school will contain a web link at the bottom labelled "**Accept Invite**" which you should use to complete your account registration and activation.

01



Click or tap on the "Accept Invite" tab to **set your password** and create account.

02



Follow the instructions to **set your password** (Make sure to choose a strong password to keep your account secure.  
For example – Domi4Bella!\$).

03



Next, fill in your personal details: First Name, Last Name, and Telephone Number.

04



After creating your account, you can now sign in to access your account using the email address and password you used at the initial stage of creating your account.

05



## 9. When is the deadline to register to participate in AgriConnect?

You are strongly encouraged to apply to participate in AgriConnect during December 2023 and January 2024 and to finalize your financial contributions for the laptops and connectivity by March 31, 2024



## 10. What are the next steps after registering to participate in AgriConnect?

Once you have registered to participate in AgriConnect you will now be able to pay for your laptop computer, connectivity device and bundle. To make a payment:

1

Log into your AgriConnect Account.

2

Click on the option in the sidebar labeled **"Equipment"**. The Equipment page will open.

3

Click on the orange Apply Button next to Equipment Request. You will then receive an email with the USSD code and the payment reference code (if you do not see this code in your inbox, check your spam).

4

Once you receive the USSD code, Dial \*718\*567#.

5

Enter the unique payment reference code that was sent to your email when prompted for identification.

6

Select a preferred connectivity partner from the list of options provided.

7

You will be informed of the total amount due.

8

You will then be prompted to provide the amount you wish to pay (you can pay the full amount due at one time or you can pay several times until you have paid the full amount due).

9

You will then be prompted to confirm and asked if you wish to proceed to make payment for the amount indicated.

10

You will receive the authorisation prompt to enter your mobile money wallet PIN to authorise and complete the payment.

If you do not make full payment at once, complete steps 4 to 9 each time you wish to make a payment.

When you have successfully completed full payment, you will:

- ◀ Receive an email that your laptop is ready to be delivered to you and details of the date of delivery of your laptop, connectivity device and data bundle will be provided





## 11. What is the cost for the laptops and connectivity?

The cost to all students except those that qualify for aid based on well-defined criteria will be between GHS 862 – GHS 895, depending on the connectivity partner that you choose. Note that your financial contribution for this brand-new HP 250 G9 laptop is less than 10% of the total cost of the laptop and connectivity. You will receive connectivity for one year.



## **12. As a female student or as a differently-abled student, do I get any preferential treatment on the AgriConnect programme?**

Yes. This is because AgriConnect is built on the theory that there is an urgent need to scale up the mainstreaming of youth and gender in agriculture and to mobilize and involve the active participation of youth, young women, and differently-abled persons in agriculture as the labour force in the sector is currently dominated by older farmers between the ages of 50 and 60 years. This is juxtaposed with the fact that there are high levels of underutilization and unemployment of youth, and differently-abled persons and higher rates of unemployment among women as compared to men. These three groups could significantly benefit from the sector, enabling them to access meaningful employment and sustainable livelihoods in a sector that is ripe for transformation. The potential for agriculture transformation in Ghana is great and youth, young women and differently-abled persons can play a key role in transforming and modernizing the agriculture sector.

### 13. What tools and resources would I receive once I register?

Once you register and are fully paid up you will receive:



A laptop and internet connectivity.



Access to our user-friendly and accessible bespoke digital platform to participate in supplemental courses, including Agribusiness and Entrepreneurship, Value Chain Development and Digital Literacy.

14. Will I be able to keep the laptop after I complete the AgriConnect programme?

Yes, absolutely.



## 15. Are there any requirements that I must fulfil once I receive the laptop?

Yes, there are requirements. You are required to complete the supplemental courses that will be available on the bespoke digital platform. Three sets of supplemental courses are available, and each student will be required to participate in one or more of the components of each supplemental course content.

Additional details on the requirements are presented under Section 2 of the FAQs.



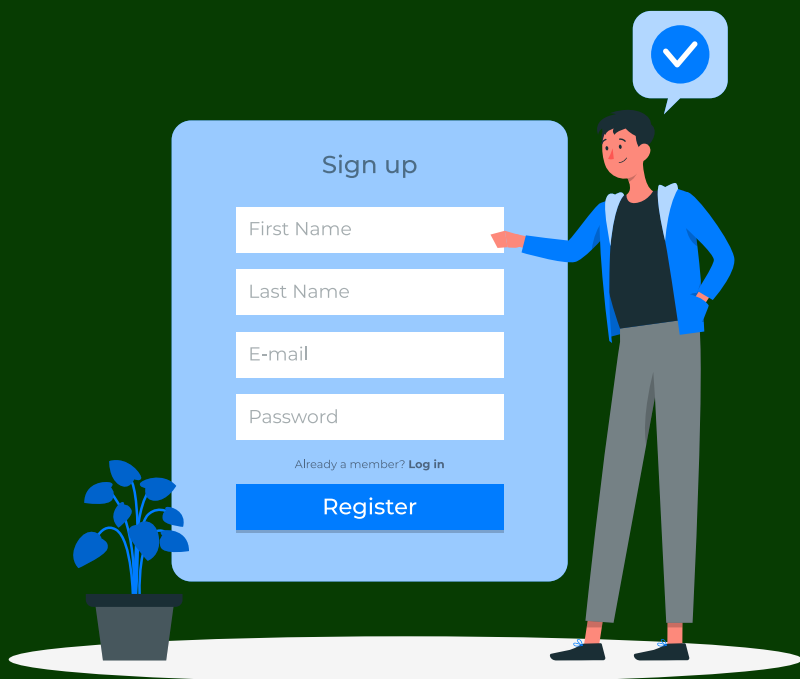
**16. If I do not officially qualify to receive a laptop from AgriConnect because of my age or academic institution, or if I already own my laptop, can I still register and participate in the supplemental courses using my personal laptop?**

Yes, you will be able to register to take the supplemental courses, and we are making arrangements to facilitate this.



**17. I am a staff member of one of the participating academic institutions. Am I eligible to participate in the programme?**

Yes, certainly you will have access to the platform and the supplemental course content. Feel free to sign up and take any of the supplemental courses.





# Section 2

AgriConnect Supplemental Course Content



## 18. What is supplemental course content?

Supplemental course content under AgriConnect has been designed to fill existing gaps in the curriculum of agriculture and agriculture-adjacent courses of study. It is quite normal for the curriculum of academic institutions globally to lag behind new areas of learning and new and emerging industry trends and standards. Supplemental course content helps to bridge those learning and knowledge gaps and provide students with the opportunity to access the new and emerging requirements in industry, helping them to enhance their own competitive advantage and be highly marketable in the labour market, enabling them to access job opportunities or pursue entrepreneurial ventures.



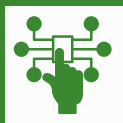
## 19. How different is the Supplemental Course from the curriculum in my academic institution?

The supplemental course content to be delivered under AgriConnect is different as it is made-up of topics that are either not currently covered or not sufficiently covered in courses of study in agriculture and agriculture-adjacent programmes, or where the information is dated. The supplemental course content has been designed to meet the needs of 21st century learners, in that it is cutting edge and will support the overall thrust for the transformation and improvements in the international competitiveness of the agriculture sector in Ghana.



## 20. What supplemental course content will be available?

In a nutshell, the three supplementary course content areas are Digital Literacy and Digital Skills Development is divided into six (6) main sections and includes fifteen modules. The Modules which comprise the main course content will be supplemented by learning videos and other creative tools and approaches to enhance instruction and keep the learner engaged. The entire course incorporates 40 hours of learning. The sections are: :



Section 1:  
Introduction to Digital  
Literacy and Digital  
Citizenship



Section 2:  
Computer Basics, Problem  
Solving, Digital Skills and  
Productivity Tools



Section 3:  
Internet  
Basics and Online  
Safety



Section 4:  
Social Media Platforms  
and Digital Marketing



Section 5:  
Website Design and  
Introduction to Computer  
Programming



Section 6:  
Introduction to  
Artificial Intelligence

In the case of value chain development, the supplemental course content has been designed to enable students to better understand value chains and the linkages between value chains, trade, and market development and how farmers (even small farmers with small plots) can capitalize on the opportunities that these value chains provide.

The selected 9 value chains that were developed into supplemental courses took into consideration their appeal to young persons, the potential job opportunities, their high economic values, their scalability, the relatively lower start-up capital investment required and above all their ability to serve as livelihood enhancement ventures. The value chains for which supplemental course content was developed are:

NO.	COMPONENT	VALUE CHAIN
1	Resilience	Rice
2	Vegetables	Fruiting & Leafy Vegetables
3	Fruits	Pineapple
4	Tree Crops	Mango
5	Technology	Greenhouse
6	Poultry	Fowls
7	Livestock / Monogastrics	Piggery
8	Agric. Journalism	Smart Scripting & Feature Reporting
9	Professional Nurseries	Vigorous Seedling Management & business opportunities

## 21. Can you share the names of the courses and the areas of focus of the supplemental course content?

The names of the supplemental courses are:



Digital Literacy to Advance Digital Skills  
Development and Prepare Youth for a Digital  
Future



Value Chain Development



Agribusiness and Entrepreneurship

## 22. Do I have to do all the supplemental or can I choose some?

All students are required to take either the full course (as in the case of Agribusiness and Entrepreneurship) or components of the supplemental courses as is the case with digital literacy or 4 value chain courses as is the case with value chain development. As you see the requirements differ across the three supplemental course content areas. Students will be provided with this information in more detail. In most cases students will be presented with choices that best meet their areas of interest or future career goals. Trust us, you will be happy and not overwhelmed at all!



## **23. What is the length of time needed to complete these supplement course content?**

The length of time varies per course and in some cases, it is dependent on the modules that you will be taking. Courses range from 3 hours in the case of some of the value chains to 40 hours in the case of digital literacy. Students will be guided on ways to complete these courses, considering your existing course loads. One of the best ways to engage with these courses is to timetable them as part of your regular timetable, taking one module at a time. Remember that in self-paced learning, you can engage with the courses on the weekend, in free periods and even during holidays – the main strategy is to ensure that you include them in your existing timetable and treat them as you would treat any of your existing courses. For final year students, note that you can complete these supplemental courses even after you graduate. The key is to be consistent and to take your time, do one course/module at a time, finish it, get your certificate, and move on to the next course/module. These courses complement your degree/certificate programme and will enable you to benefit from new knowledge and skills. That is the key!

## 24. Will I be assessed at the end of each AgriConnect supplemental course?

Yes, you will be required to do short quizzes and short answer questions at the end of each module that you take.





## 25. Do I get a certificate after completing each supplementary course?

Yes, you will receive a certificate for each supplemental course/module completed.



## 26. What is supplemental course content?

Supplemental course content under AgriConnect has been designed to fill existing gaps in the curriculum of agriculture and agriculture-adjacent courses of study. It is quite normal for the curriculum of academic institutions globally to lag behind new areas of learning and new and emerging industry trends and standards. Supplemental course content helps to bridge those learning and knowledge gaps and provide students with the opportunity to access the new and emerging requirements in industry, helping them to enhance their own competitive advantage and be highly marketable in the labour market, enabling them to access job opportunities or pursue entrepreneurial ventures.



## 27. Will the supplemental course content available through AgriConnect conflict with my current courses?

No, the courses are not designed to conflict with any of your existing courses but rather will complement them and enhance your knowledge and skills towards making your degree or certification more competitive.



## 28. Can I replace some of my current courses with AgriConnect supplementary course content?

No. Remember what is being offered through AgriConnect is supplemental to your core courses and electives. As the name suggests, these new areas of learning will supplement and enhance what you are learning.



## 29. How beneficial will the supplemental course content be for my future career path?

Extremely beneficial. The supplemental course content has been designed to not only enhance your knowledge and skills but also to make you more competitive and marketable and improve your prospects for decent and fulfilling employment. This new knowledge and skills will also help to improve your confidence to explore a range of entrepreneurial opportunities that exist in the agriculture sector and related agriculture value chains.



**30. All of the supplemental course content will be available online.**

All of the supplemental course content will be available online.



### 31. What online learning platform is being used to deliver the supplemental course content?

All students will have access to AgriConnect's user-friendly and accessible bespoke digital platform designed specifically to enable students to effectively participate in the supplemental courses. This bespoke digital platform is the centrepiece of AgriConnect, allowing for all operations, from student application, qualification, distribution of laptops and connectivity devices, development of the online supplemental courses, course content access etc. This platform was developed by theSOFTtribe, which is a leading and internationally known software development company and IT solutions provider for over 20 years. You are in good hands!



## 32. Will the supplemental course delivery be asynchronous and self-paced?

Yes, delivery will be asynchronous and will be based on self-paced learning. In other words, you will not have access to a lecturer, although you will be able to leave questions and have those questions answered or ask for further explanations. With self-paced learning, you can either spend shorter or longer times engaging with the material. There are several advantages of self-paced learning including: increased flexibility, autonomy, and improved time management skills. By having the ability to work at your own pace, you can take the time to better understand the material and complete assignments. Self-paced learning has also been known to improve student confidence as students begin to develop and grow as independent persons/learners, learning new things without anyone helping them, thereby enjoying a significant boost in their self-esteem. Notwithstanding these positives, we do understand that self-paced learning can get lonely, the importance of interaction with peers etc. and as such we will set up various groups including using WhatsApp, and even Facebook and Instagram to support interaction with peers.



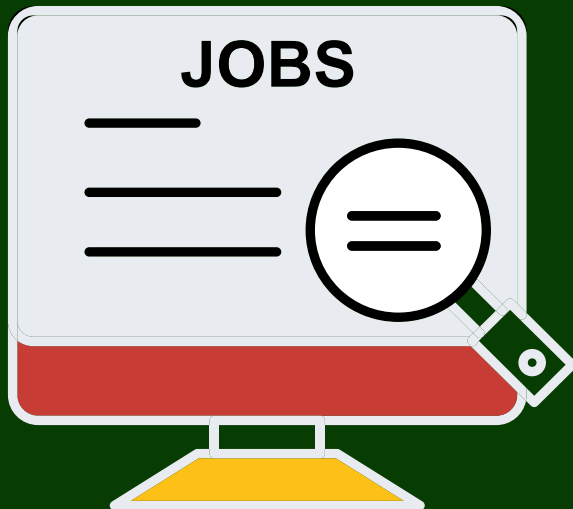
A woman with dark skin and braided hair, wearing a white long-sleeved shirt, is shown from the chest up. She is looking upwards and to the right, with her right arm raised. The background is a soft-focus outdoor scene. A large green rounded rectangle is overlaid on the lower half of the image, containing the section title and subtitle.

## Section 3

AgriConnect's Contribution to Advancing  
the Sustainability of Ghana's Agriculture Sector

### 33. Are jobs and/or internships available through AgriConnect?

Currently, jobs and internships are not part of AgriConnect. However, because we have been interacting with several industry players in the development of the supplemental course content, we do believe that this will become an advantage for students. Through the development of the supplemental course content areas, the AgriConnect team also brought together academia and industry players in various forums. These interactions and engagement auger well for academia/industry programmes such as internships, guest lectures etc. In the full-scale rollout of AgriConnect it is potentially an area that we can look at.



### 34. Is AgriConnect aligned with the Government of Ghana's policy on agriculture?

Yes, absolutely. AgriConnect is aligned with, and is designed to advance the Government of Ghana's thrust to create an enabling environment to make agriculture an attractive and profitable venture for Ghanaian youth, creating both employment and sustainable livelihoods for the expanding youth population. AgriConnect is also aligned to several national policies including Ghana's national economic plan, Ghana Vision 2020, and the National Youth Policy (2010). Under AgriConnect, the youth, including young women, and persons with disabilities (PWDs), will be provided with devices to facilitate their access to digitally enhanced learning in agriculture and agriculture adjacent sectors as a means of increasing their access to work opportunities and improving their livelihoods.



## 35. What makes AgriConnect innovative and different?

AgriConnect promises:

- ◀ That the technology deployed and the capacity built through the supplemental course content related to value chain development, digital literacy and entrepreneurship in the agricultural sector will drive the impact, scale and interest of youth, women, and differently-abled persons in the agriculture sector, and importantly bridge the digital divide.
- ◀ To address the urgent need to reduce the extent of labour under-utilisation among youth.
- ◀ To place focus on education and training to enable youth in agriculture to benefit from new and emerging opportunities in agriculture. The knowledge products that are being designed and disseminated through the devices will be innovative, culturally relevant, and fully aligned with the needs of the labour market and importantly capture the interest and imagination of youth in Ghana.
- ◀ That the activities and outputs of the Programme will in the near future support the modernization of the agriculture sector by boosting productivity and supporting the development of agribusiness, thereby creating the linkages between farms and plots and other economic activities such as manufacturing and agro-processing.
- ◀ To be innovative in its approach as the Programme is designed to bring scale and impact by allowing youth, women and differently-abled persons to align their educational qualifications in agribusiness, digital skills and value chain development with dignified and meaningful jobs that will allow them to maximise the potential of their entrepreneurial spirits towards improved and sustainable livelihoods.

Follow our social media channels for information on  
how to participate in AgriConnect.

Email us at: [agriconnect@softtribe.com](mailto:agriconnect@softtribe.com)

Visit us at: <http://agriconnectghana.com>



# AgriConnect FAQS